

*i&U*series

student furniture :
single student desks



U Series DUB2026
Shown with Value top
in Grey Nebula.



I Series DIS2026
Shown with Premium
top with Lotz edging and
optional plastic book box.



*i*ndividually
*U*niversal

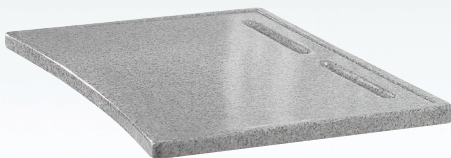


Tops of Choice

The decision is yours to choose a top that best meets your needs and budget.

High pressure laminates in .75", 1.0" or 1.25" thickness; our **Value** tops have an edge banding finish, and our **Premium** series of tops are finished with an ultra durable, spray on, Lotz Armor Edge. All laminate tops are available in an almost endless array of colors and texture. Or choose our **Performance** tops, a wood core covered in multiple layers of reinforced resin and a color Gelcoat finish. Performance desk and table tops are a chemical resistant completely sealed surface, thereby eliminating the need for any additional edge finish. The underside of all our tops are finished in a manner to prevent moisture penetration and ensure structural strength.

Special applications are not a problem, Chemsurf treatment and chemical resistant core materials are available for the laboratory or shop and maple butcher block can be ordered for food preparation areas or gymnasiums.



Performance tops can be shaped for special applications.



I Series Desk

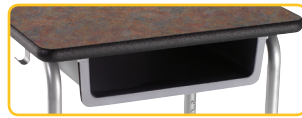
- ~ Adjustable from 24"-30" height
 - ~ 14 gauge steel frame
 - ~ Nylon floor glides
- Photo shows Premium top with Lotz edge.



Bag Hook

Leg height adjustment

Optional Book Boxes available for the I series



Molded plastic



Coated wire

U Series Desk

- ~ Fixed height desk
- ~ Available in two heights: 27" and 30"
- ~ 1" square tubular 16 gauge steel frame
- ~ Desk frame fully assembled stacks for economical shipping
- ~ Nylon floor guides

Photo shows 1.25" Grey Nebula top with edge banding.



Testing and research continues. To best meet the needs of our customers IFC reserves the right to improve and change models, specifications and design without notice.